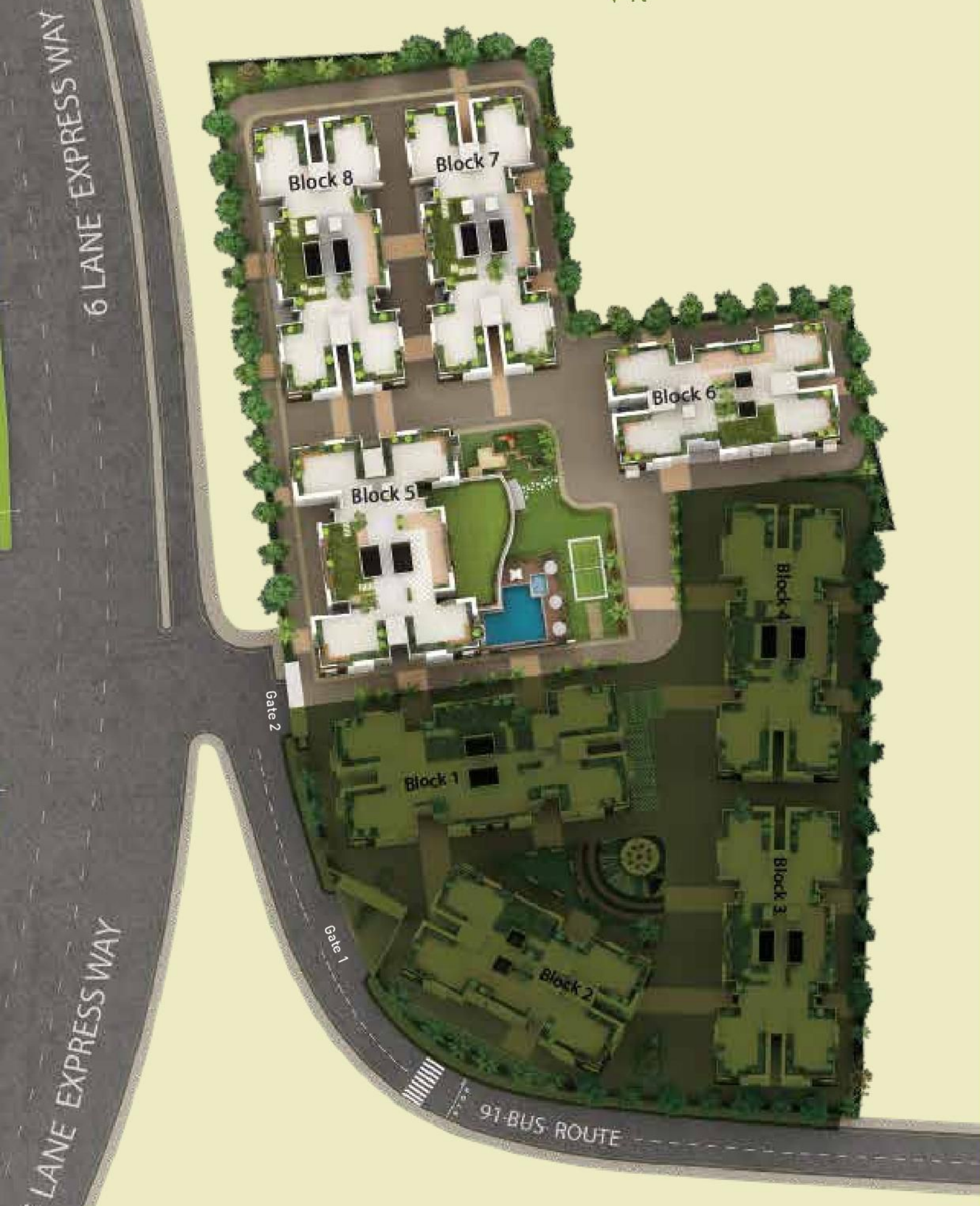


MASTER PLAN

▼ N

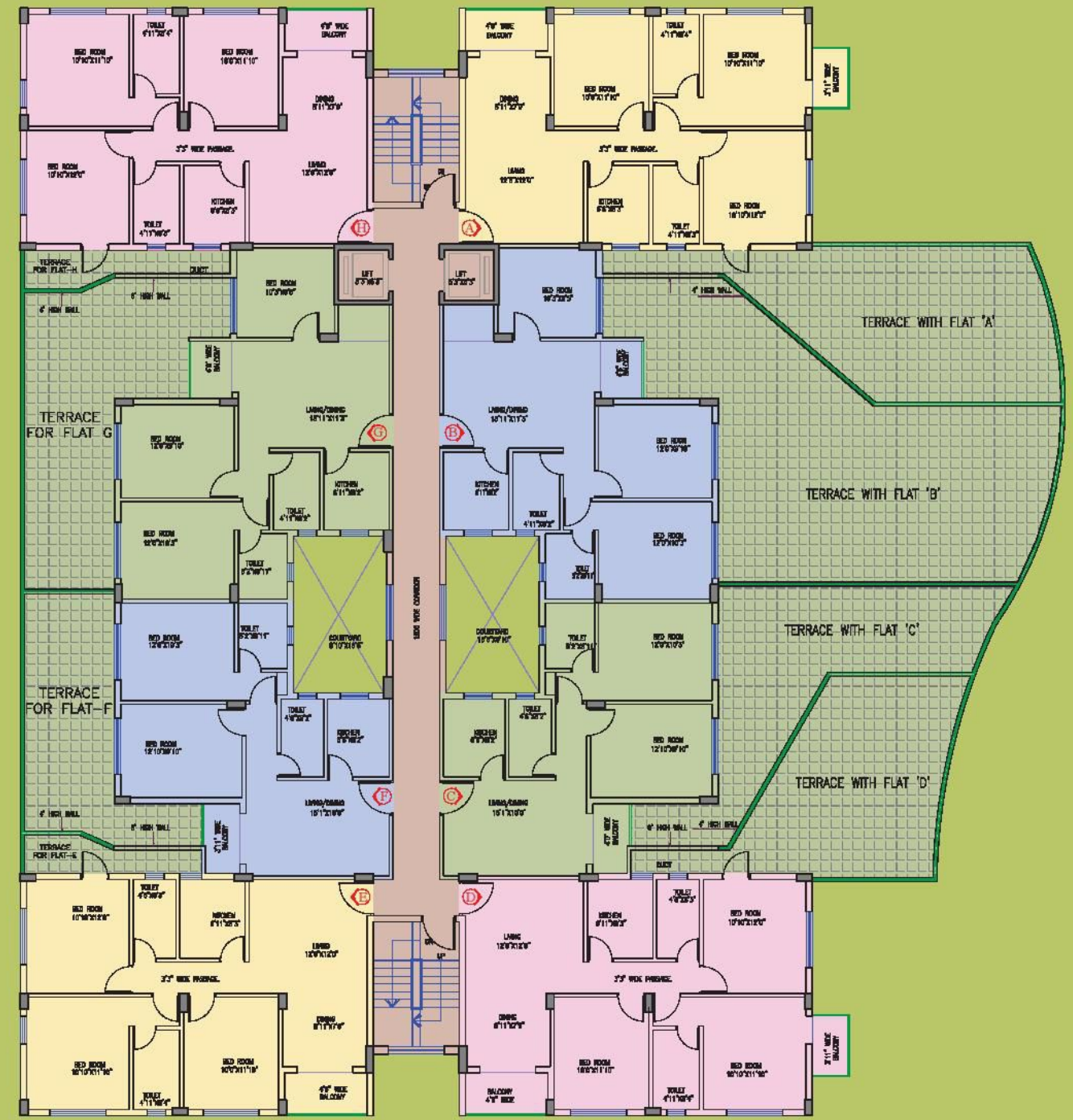


TYPICAL FLOOR PLAN

BLOCK 5 | ▼ N



BLOCK	FLAT No.	BHK	Built Up Area
5	A	3BHK	971
	B	3BHK	825
	C	2BHK	681
	D	3BHK	970
	E	3BHK	945
	F	2BHK	681
	G	3BHK	825
	H	3BHK	945

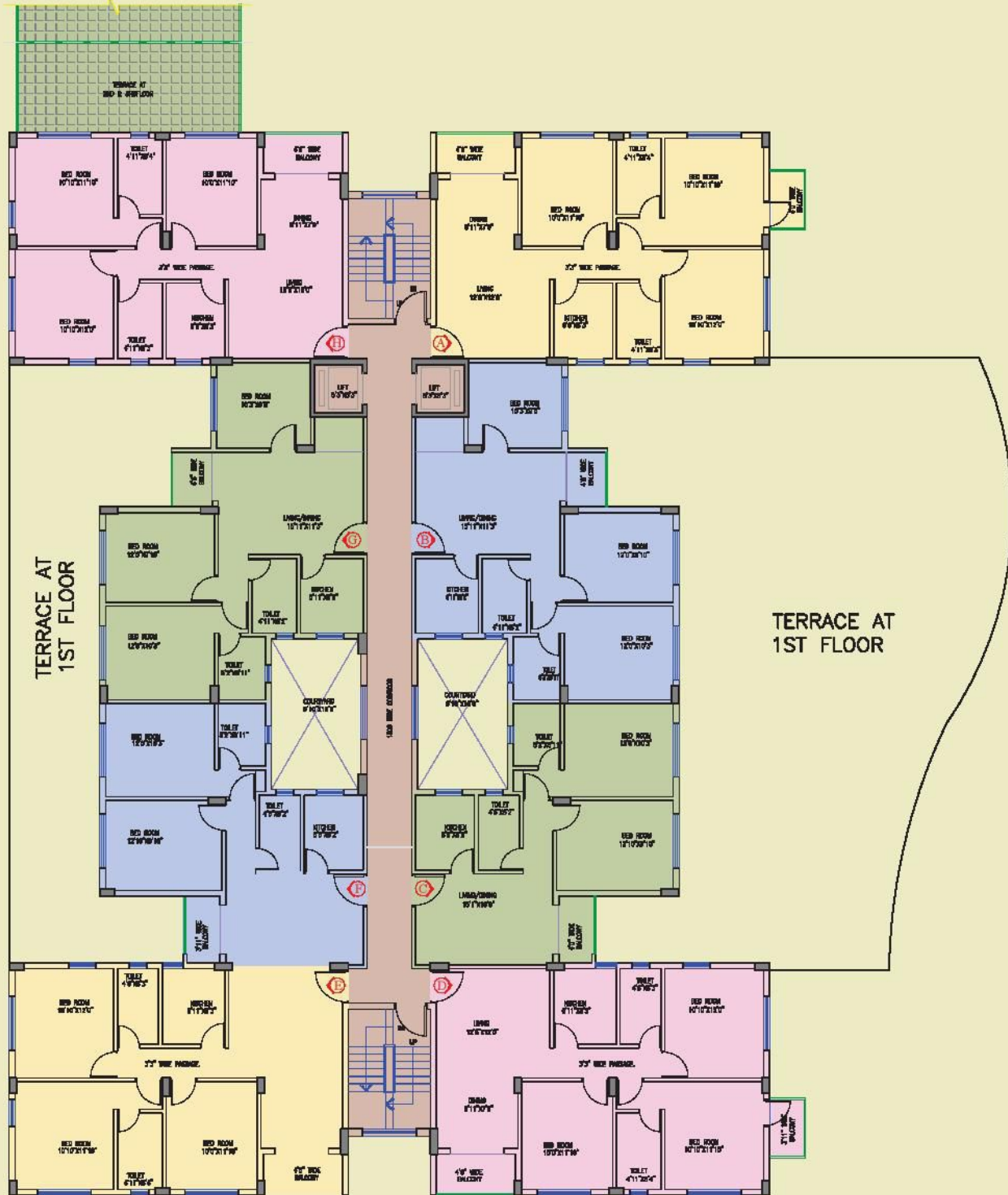


TYPICAL FLOOR PLAN

BLOCK 6 | N



BLOCK	FLAT No.	BHK	Built Up Area
6	A	3BHK	847
	B	3BHK	847
	C	2BHK	769
	D	3BHK	886
	E	3BHK	870
	F	3BHK	915

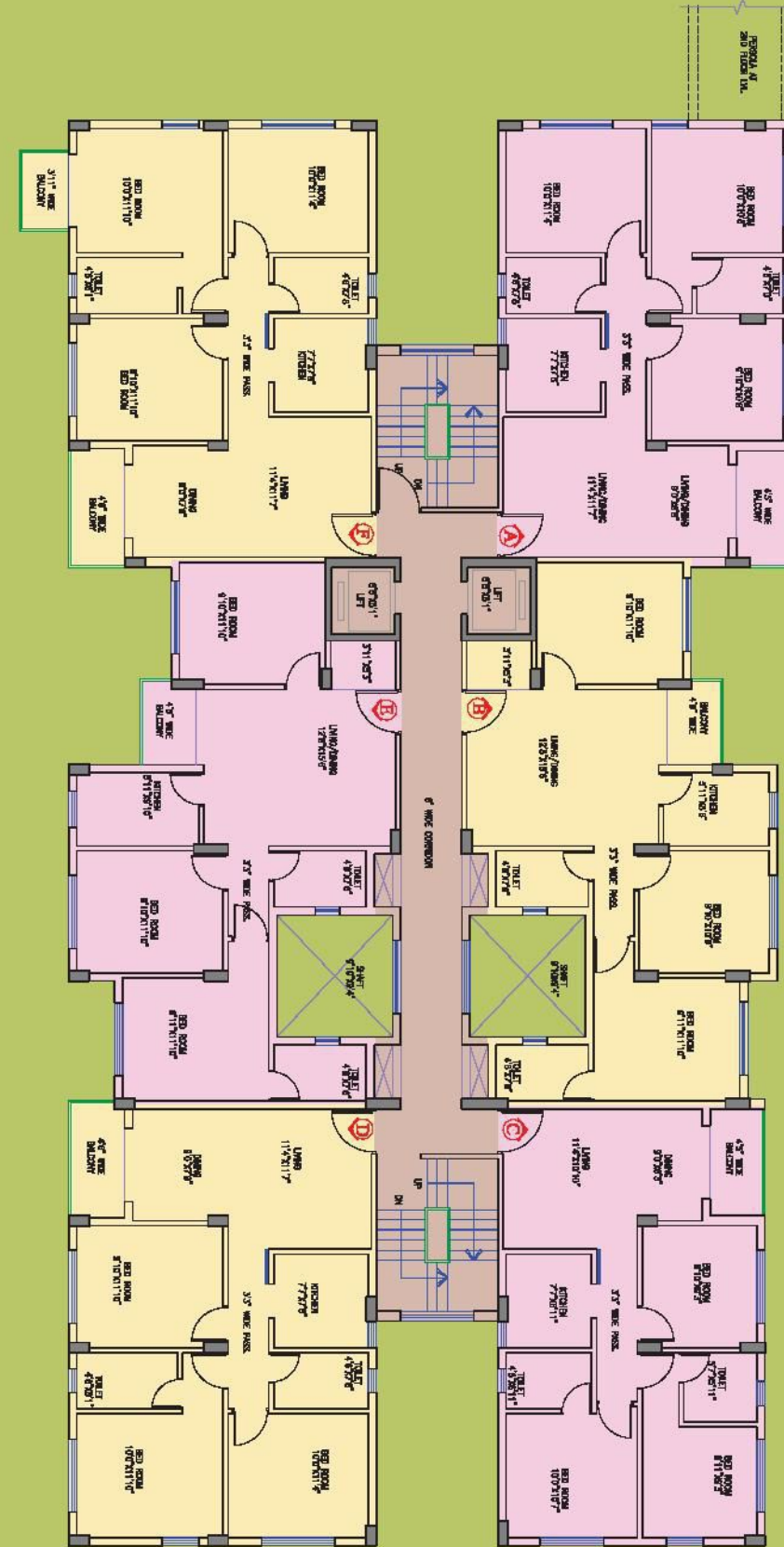


TYPICAL FLOOR PLAN

BLOCK 7 | N

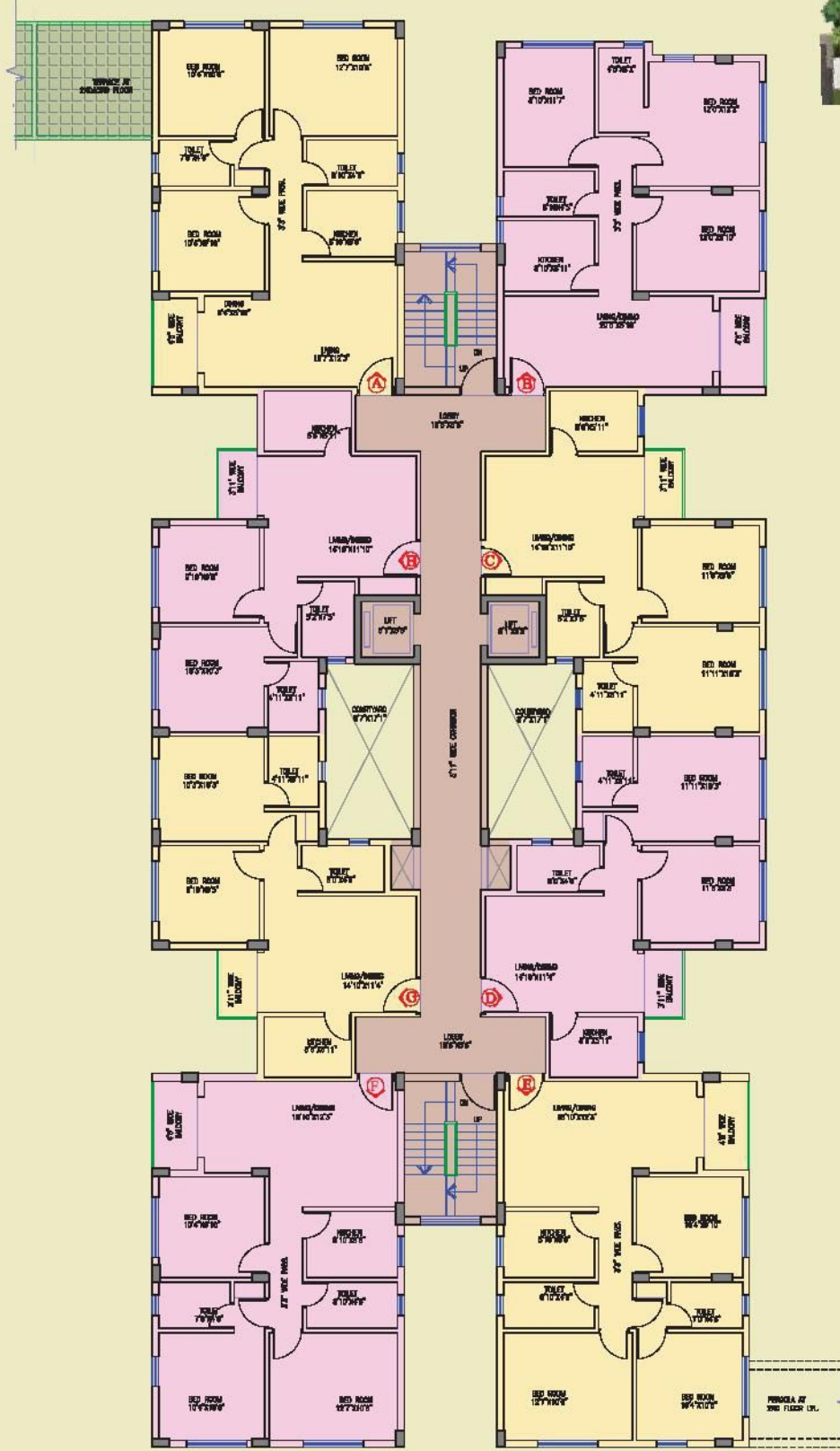


BLOCK	FLAT No.	BHK	Built Up Area
7	A	3BHK	890
	B	3BHK	884
	C	2BHK	674
	D	2BHK	664
	E	3BHK	890
	F	3BHK	890
	G	2BHK	629
	H	2BHK	640



TYPICAL FLOOR PLAN

BLOCK 8 | N



BLOCK	FLAT No.	BHK	Built Up Area
8	A	3BHK	912
	B	3BHK	945
	C	2BHK	674
	D	2BHK	664
	E	3BHK	890
	F	3BHK	890
	G	2BHK	629
	H	2BHK	640

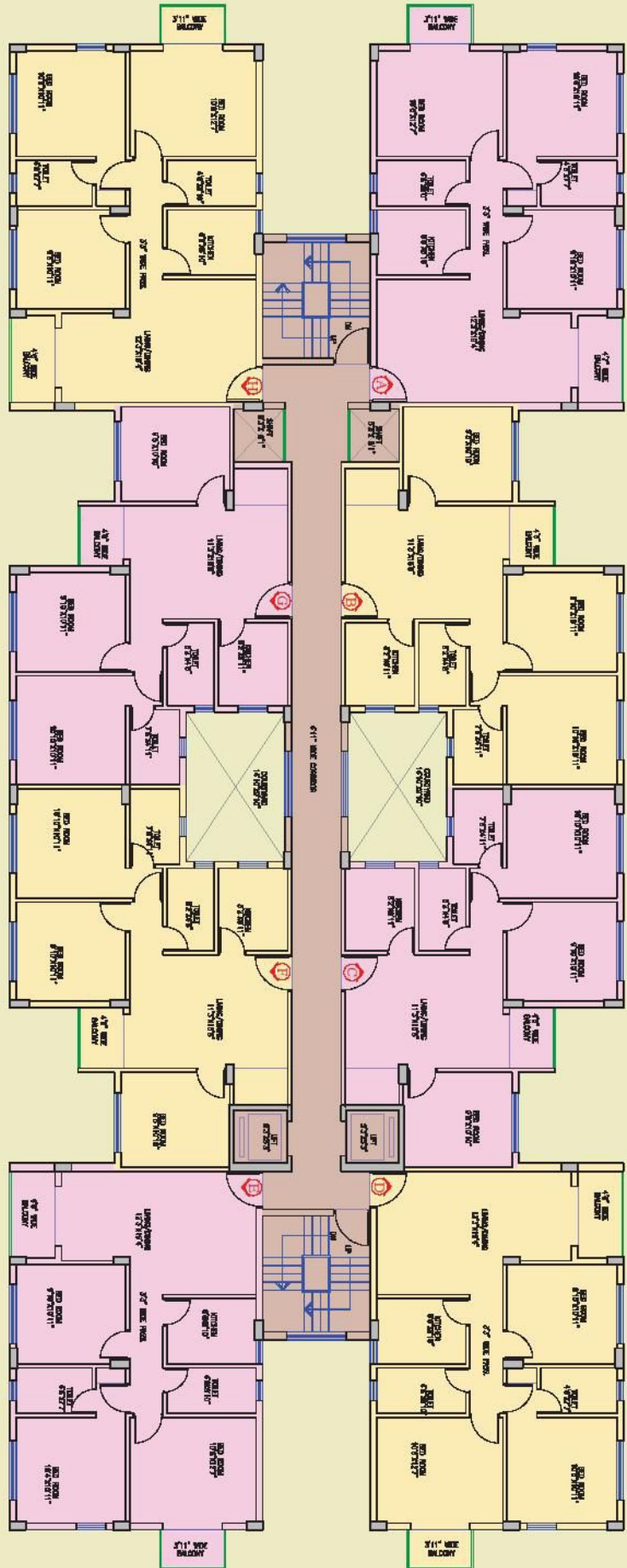
MASTER PLAN

N



TYPICAL FLOOR PLAN

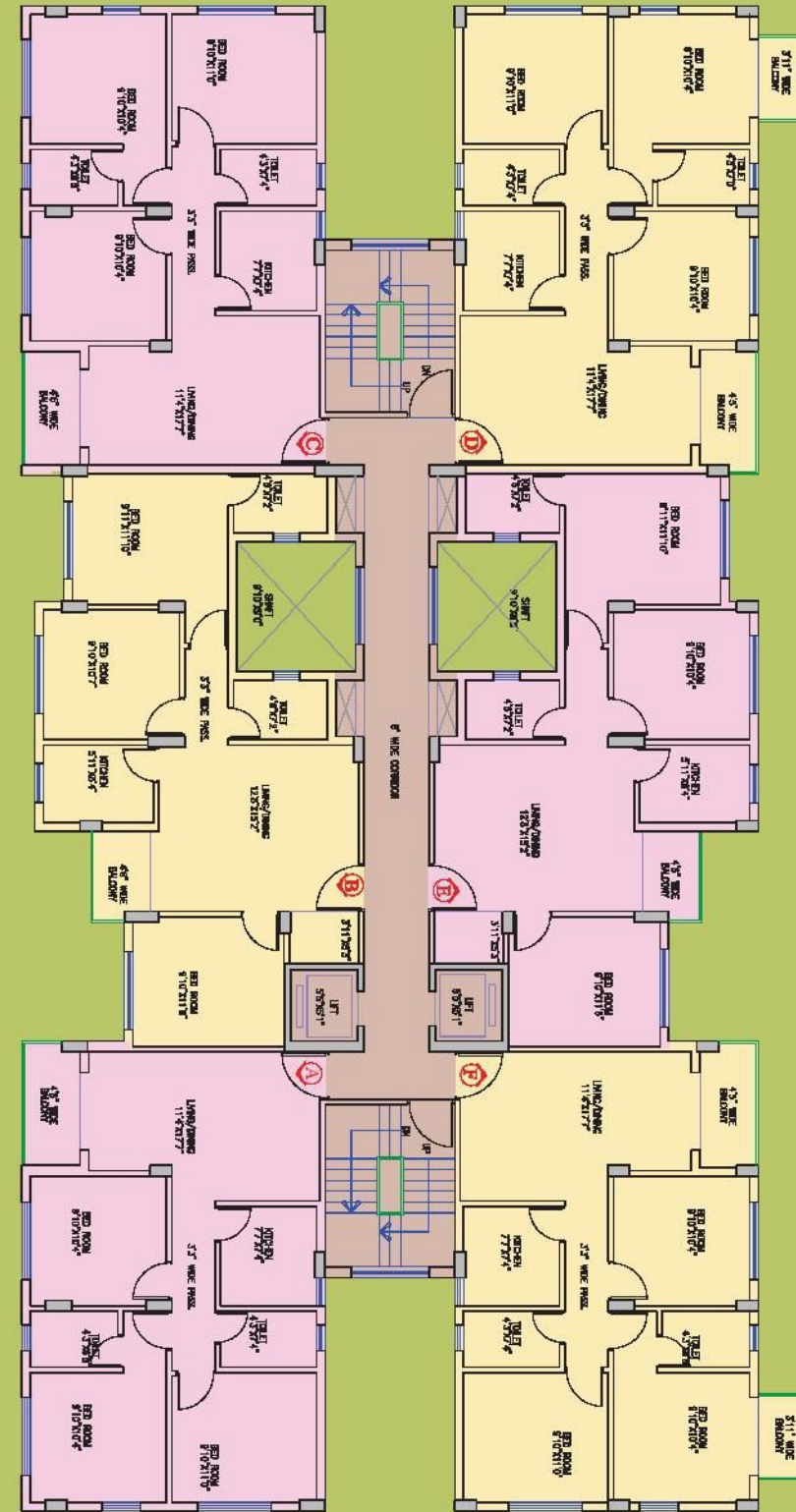
BLOCK 1 | N



BLOCK	FLAT No.	BHK	Built Up Area
1	A	3BHK	935
	B	3BHK	811
	C	3BHK	810
	D	3BHK	936
	E	3BHK	936
	F	3BHK	809
	G	3BHK	810
	H	3BHK	935

TYPICAL FLOOR PLAN

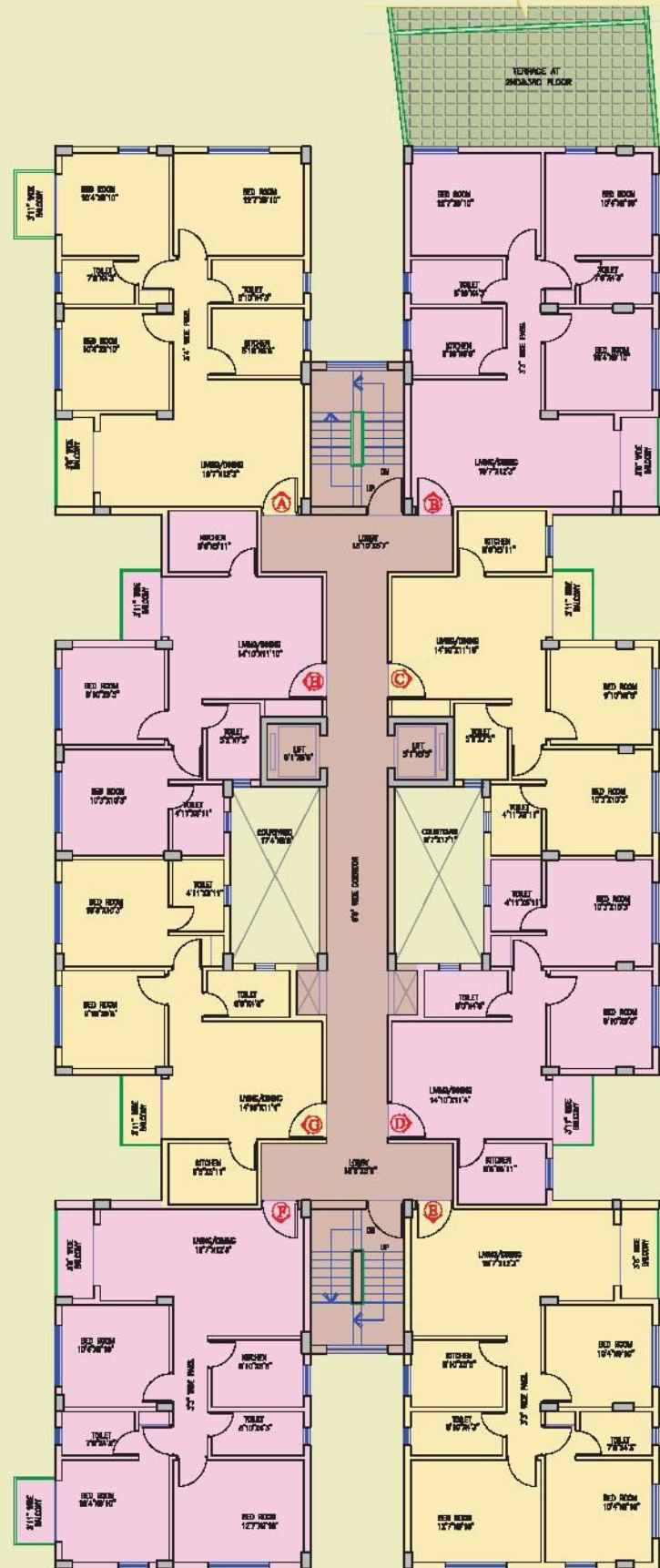
BLOCK 2 | N



BLOCK	FLAT No.	BHK	Built Up Area
2	A	3BHK	815
	B	3BHK	831
	C	3BHK	814
	D	3BHK	839
	E	3BHK	831
	F	3BHK	841

TYPICAL FLOOR PLAN

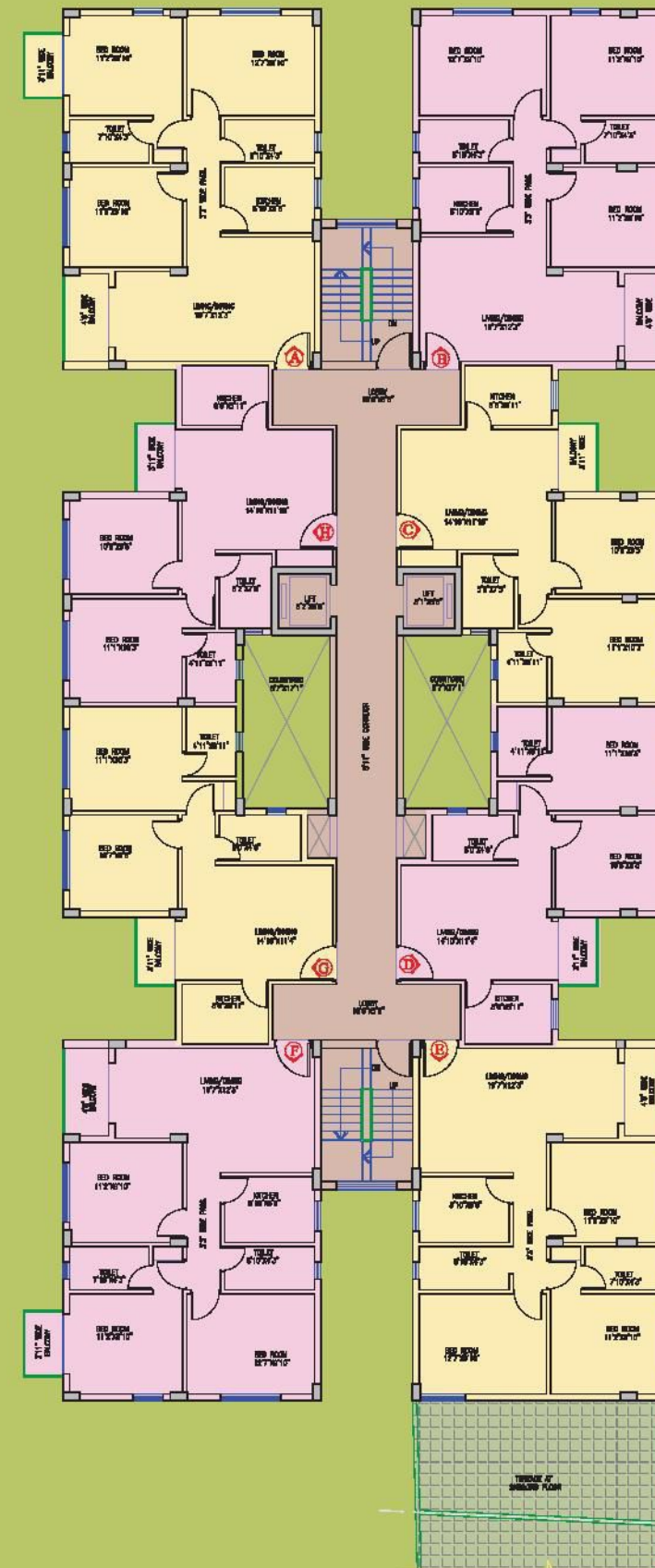
BLOCK 3 | ▼ N



BLOCK	FLAT No.	BHK	Built Up Area
3	A	3BHK	894
	B	3BHK	868
	C	2BHK	639
	D	2BHK	629
	E	3BHK	868
	F	3BHK	894
	G	2BHK	629
	H	2BHK	639

TYPICAL FLOOR PLAN

BLOCK 4 | ▼ N



BLOCK	FLAT No.	BHK	Built Up Area
4	A	3BHK	923
	B	3BHK	897
	C	2BHK	657
	D	2BHK	646
	E	3BHK	897
	F	3BHK	923
	G	2BHK	646
	H	2BHK	657